

NYLO Las Colinas Hotel, Tapestry Collection by Hilton



1001 W Royal Ln
Irving, Texas 75039

(972) 373-8900

tapestriecollection3.hilton.com/tc/nylo-las-colinas

LOCATION

The NYLO Las Colinas Hotel, Tapestry Collection by Hilton is perfectly situated for quick access to Dallas, but without the downtown price tag. Southlake, Grapevine, Coppell, Euless, Arlington, Addison and Fort Worth are also located within close proximity.

ACCOMMODATIONS

Inspired by cosmopolitan spaces in the world's most exciting cities, the loft-style accommodations blend urban chic design with environmentally conscious construction. Exposed brick walls, picture windows, 10-foot ceilings and polished concrete floors exemplify the stylish tendencies in energy-saving resources. 200 guest lofts and five suites, including 15 certified PURE allergy-free rooms.

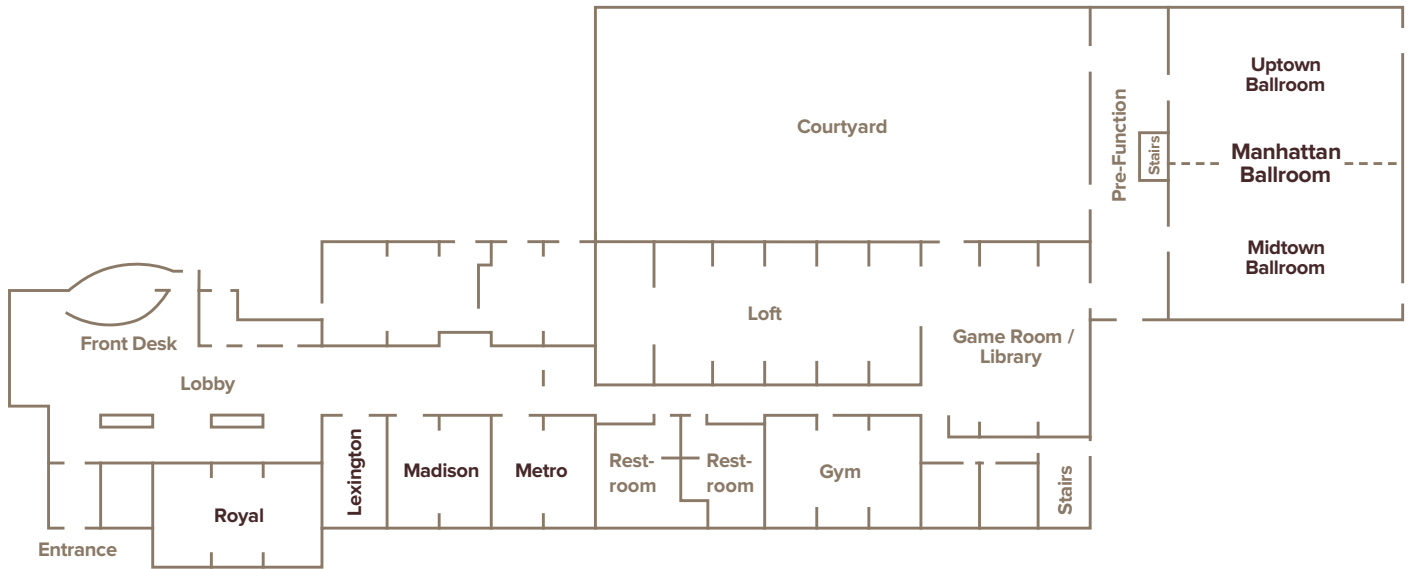
MEETING FACILITIES

Six meeting rooms with up to 7 possible combinations for a total of 10,275 square feet of meeting space. Wired and wireless connection available. The Manhattan Ballroom features 18' ceilings, an oversized glass window overlooking the Courtyard, adjustable lights and a built-in sound system. It has 3,110 square feet of meeting space and can be divided into two smaller ballrooms. Seats up to 364 theater, 168 classroom or 240 in rounds.

TRANSPORTATION

DFW International Airport is 9 miles away and Love Field Airport is 12 miles. Free shuttle to Las Colinas businesses within a five mile radius of the hotel.

NYLO Las Colinas Hotel, Tapestry Collection by Hilton



Meeting Room	L x W x H	Sq. Feet	Banquet	Board Room	Classroom	Hollow Square	Reception	Theater	U-Shape
Manhattan Ballroom	48 x 64 x 18	3,115	240	60	158	68	364	364	58
Midtown Ballroom	48 x 32 x 18	1,510	120	48	84	34	182	182	29
Uptown Ballroom	48 x 32 x 18	1,555	120	48	84	34	182	182	29
Royal Boardroom	21 x 34 x 11	900	-	18	-	-	-	-	-
Madison Boardroom	23 x 22 x 11	600	40	16	19	20	59	59	16
Metro Boardroom	23 x 22 x 11	600	40	16	19	20	59	59	16
Lexington Boardroom	23 x 11 x 11	300	-	1-	-	-	-	-	-